



COMINGS 'n GOINGS

Quarterly Publication of the GMC Heritage Cruisers

Covering Parts of Ontario, New York, Pennsylvania, Ohio, Michigan, & West Virginia

www.gmcheritagecruisers.com

Winter 2010

The 2010 Rally Schedule

14- 16 May – Sherkston Shores – Patersons
& Urbanskis

All details were not available to the Rallymasters so the rally information will be sent later. It will be a Friday to Sunday rally with an option to stay until Monday.

4-6 June – London, Ont – Stuckeys
See details attached

July – Open

August – Open

3-5 September – Pembroke, Ont - Gosse
& Barbers

Dennis Lepard, VP Wagon Master, is looking for rally masters for the open months. Give him a call (716-684-5882) so he can finish off the 2010 season!!!

24-29 September – GMCMF Fall Convention
DuQuoin, Illinois

June Rally



What is probably the largest cruise-in in Canada was started several years ago by Steve Plunkett, and hosted by him on his estate on the southwest edge of London, Ontario. It has grown every year with remarkable displays of every kind of vehicle you can imagine and some you cannot imagine. Steve's father was one of the co-inventors of the birth control pill and when he died he left a foundation dedicated to disbursing funds to area hospitals and health centres. Millions of dollars have been raised and used to forward medical research in many areas. Steve has dedicated any funds derived from the Cruise-In for the same purposes. There is no charge for this rally! The rally fee of \$60 per coach will cover the minimal costs of our usual donut and coffee breakfasts and the remainder will be donated to the foundation as a gesture of our GMC Heritage Cruiser club's appreciation of what he has been doing these past years.





Rally 2010



Thirteen lucky Heritage Cruisers enjoyed the 7th Annual Coachless Winter Rally in Niagara Falls. Eight other members were due to attend but fell sick with colds, etc., a few days before. We had our traditional big birthday cake even though this year Sue and Linda were not able to attend ... a big happy 90th to Sue and Sid ... some ladies shopped in Niagara on the Lake, we played a few games AND ate copious amounts of chocolate goodies supplied, as usual, by Lena. In attendance were: Mary & John Peazel, Robin & Jim Hadcock, Lena & Dick Longman, Kathy Alexander & Jack Copeland, Ian Oliver and the hosts Lois & Fran Urbanski and Lou Ann & John Podmore.

In Memoriam

Barb Oliver passed away on 5 January after a long illness with cancer. She and Ian were very active in the Heritage Cruisers for many years. Barbara was a member of the Executive over five years and our president for three of those. Please accept our condolences, Ian.

On 8 January, Janina Michalkow passed away. She has been troubled with cancer, off and on, over the last 3 years. Janina &

Nick joined in the early '90's and were quite active in the Chapter until a few years ago.

Sick Bay

In early February, Norma Hill suffered a stroke that left her paralyzed on her right side and with speaking difficulty. She is still in the Ottawa hospital. We all wish you well Norma and are hoping for a full recovery.

FMCA Dues

Below is a portion of a letter from the National President of FMCA to let all chapters and members know the outcome of a recent vote in FMCA to increase dues. Note the urging to renew now at the current price before 1 April.

The FMCA Governing Board voted by mail ballot (322 for, 91 against and 84 not voting) to increase the FMCA membership dues by \$5.00 per year. Effective April 1, 2010, your annual dues will be \$40 instead of \$35. Steps have been taken over the last two years to reduce expenditures while at the same time keeping the quality of an FMCA membership. As I am sure you are aware, the motorhome industry, including many companies that are commercial members of FMCA, has experienced a downturn for the past two or three years. A number of companies have even gone out of business. As a result, the revenue FMCA receives from these commercial entities has declined. Some companies are now in the reorganization process and should be back with us soon, advertising in Family Motor Coaching magazine and participating in FMCA international conventions. It is important that we keep FMCA the organization that it is, which enhances your motorhome lifestyle with the exceptional benefits we offer. To name just a few:

- 12 months of Family Motor Coaching magazine - Value \$30

- **MEDEX Emergency Medical Evacuation Program - Value \$99**
- **International Conventions and Area Rallies that allow you to interact with other FMCA members enjoying the lifestyle; to connect with the motorhome products and the companies that produce them; and to avail yourself of many, many informative seminars and also some topnotch entertainment, and; Full access to FMCA.com, which puts a wealth of motorhome related motorhome owners-Value PRICELESS!**

The dues increase will take effect for those who renew on April 1 and beyond. Regardless of your renewal date, you can go online now and renew your dues at the old rate and also take advantage of the multi-year discounts (two, three, and five years) at the old rate up until April 1, 2010. [RENEW NOW!](#)

Chapter Membership

The Chapter membership stands at 90 with the new members mentioned below.

New Members

Phil & Trish Nau of London, Ont joined in November. They attended the August rally in Milton. Welcome, we hope you enjoy the Chapter and all it has to offer.

GMC Motorhomes International – Convention Manager

We at GMC Motorhomes International are seeking a replacement for Ray Swartzendruber, our Convention Manager. Ray has decided to retire and we are accepting applications with resumes for this position. The position of Convention Manager is a paid position with an annual

salary of \$17,500.00 plus approved expenses.

The general duties of Convention Manager are to:

1. *Set up and manage two conventions (rallies) annually.*
2. *Report to the president and the board on convention services status and financial activity.*
3. *Develop convention budgets and control expenditures to stay within those budgets.*
4. *Sit on the Board of Directors and provide assistance and expertise.*
5. *Maintain and account for GMCMI's equipment and supplies associated with convention services.*

General requirements.

An applicant shall have educational and, or career experience in business administration. They shall have leadership, communication and inter-personal skills with computer knowledge enough to perform their duties.

Anyone wishing to apply or anyone wanting to suggest someone for this position, contact any of the Executive Search Committee members.

The Executive Search Committee consists of:

JR Slaten-502-836-2097

jrslaten@aol.com

Fred Hudspeth-903-509-2495

fbhtxak@sbcglobal.net

Ray Swartzendruber-574-457-3564

redruber@gmail.com

Emery Stora -505-660-9507

emerystora@mac.com

Jim Buchanan-828-464-5105
chicksaw@charter.net

Dave Lenzi- 810-653-3902
mlenzi@charter.net

Regards,
JR Slaten

President, GMC Motorhomes International



Emailing of the Newsletter

Receiving the newsletter is still available by email for anyone who would like to have it delivered to their computer. Let us know if you want to change to email delivery.



Membership Dues for 2010

There are still a few outstanding dues for the 2010 season. If you received the enclosure entitled **Second Notice**, you still owe the Treasury.

Complete the dues enclosure (if none is enclosed, you owe nothing) and mail it with your dues in either US or Canadian funds to our Treasurer, Jim Hadcock. **The cost of dues is \$15.00US or \$16.00Cdn .**

Please pay on time so Jim doesn't have to chase you. Also, you are dropped off our mailing list on 1 May and will miss a newsletter or rally information.

2009 Financial



Statement

Last year's Financial Statement is enclosed for your review from the Treasurer, Jim Hadcock

FMCA Benefits

During the year end membership audit with FMCA it was pointed out by the FMCA staff that some of our members only list one person's name on their membership. It is important that your spouse or partner is also mentioned on the membership. There are benefits such as the Accidental Death Insurance and Medex that would only be available to the one listed and not both. A way to check is the address label on the FMCA magazine and the membership card should show both names. If there is any doubt, Contact FMCA at 800-543-3622 and ask for "Membership". It will be easier if you have your FMCA number when you call.

Used MH Parts

A source for GMC parts is in Syracuse, NY. A number of coaches are being stripped and the parts are for sale. Give them a call at 315-863-3211 and ask for John, if you need anything.

Classified

For Sale: Valterra RV toilet - \$100; refurbished rear subframe - \$300; galvanized engine subframe - \$1995; Coleman TSR roof AC - \$200; minivan electric drivers seat - \$100; roof storage pod - \$100; two x 2 ¾" rear brake backing plates - \$200; - Dan Stuckey – 519-844-2083

For Sale: 1976 Palm Beach – original owner, stored in heated garage in winter, rebuilt engine (Oct 2000) & recent rebuilt transmission; inverter & batteries replace Onan, new fridge & awning. Includes matching covered trailer & golf cart - \$30,000 Cdn – contact Darlene Beardwood Carter – 819-923-5265

For Sale: 1977 Royale with 455 motor. installed about 35,000 miles ago. Recent frame replacement, well maintained, stored in covered garage – Syd Collier – 905-453-1257

Listing of GMC-related items for sale is available to HC members and will only appear for two issues unless otherwise arranged.



Tech Talk

Living Area Electrical

Do you still have the big gray “buzz” box providing 12 volt power to your coach living area??? Have you considered what’s new

and available to upgrade the system??? This is one way to upgrade the way you provide charging for your batteries and change 120 volt shore power into 12 volts that the coach needs to operate systems such as lights, furnace, fans, etc.

First, a Progressive Dynamics converter replaced the old gray box. The new one is one quarter the size. I chose the PD9140A model with a 40 amp output. It provides 13.6 volts to the systems and a variety of power to the batteries for charging and extending their life.



40 Amp Converter and the Charge Wizard

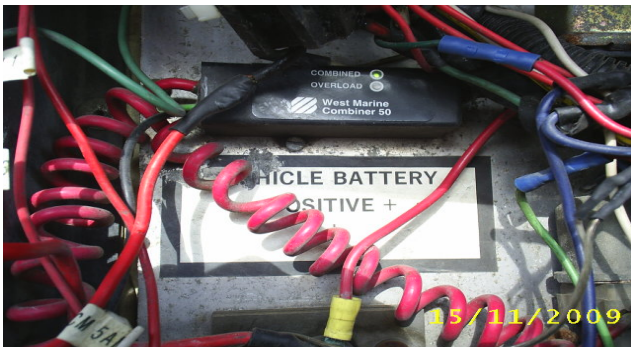
The cost today is about \$170 with the charge wizard built into the converter. There are other converters with more features and a higher cost, so looking around for what you want is wise before you buy.

Next, an Automatic Power Transfer Switch was added. It selects the source of 120 volt power that goes to the converter and other devices in the coach. It always selects shore power if the coach is plugged in. It will select the generator, when it is started, only if no power is available from shore power. There is no plugging in or unplugging of a 30 or 50 amp cord to the coach to get power from the generator. They cost about \$70.00.



Automatic Transfer Switch

Finally, a battery combiner replaced the battery isolator at the front of the coach. It allows the converter to keep all the batteries charged when a 120 volt source is available, whether it is shore power or generator. The voltage loss across the combiner is very small compared to a isolator, so it's more efficient.



Battery Combiner

It's a small thing but it has worked well for years. There are other sizes and styles available at up to \$100.

This is a brief outline of changes made to bring the coach living area 12 volt power and battery charging into this century. Immediate changes were noticed in brighter lights, always fully charged batteries, less loss of fluid level in the batteries. The two six volt house batteries are six years old and are still going strong. That can't be said for

the previous sets!!! (can't count the two that froze on a dark January night!!!!)

This was just my solution to improving the system. There are others and other products. It has to be done correctly because of the obvious dangers of an incorrect hook-up or installation. I have no electrical training, so a lot of questions were asked and the instructions for each device followed exactly.

Liability Disclaimer

The GMC Heritage Cruisers, its officers, and the Editor are not responsible for the accuracy of advice and/or technical notes published in the "Comings 'n Goings". Adjustments or installations made to coaches on the basis of information presented in this publication are the responsibility of the individual coach owner.



2010 Newsletter

Submissions for the Spring 2010 Edition of the "Comings 'n Goings" are due by 15 April 2010 to the Editor, Al Hamilton at gmchc@1000island.net.

Enclosures:

June Rally Registration & Information

(Not Included on Website)

2010 Dues 2nd Notice (not to all Members)

2009 Financial Statement